

Compulogic SLi-4 Smart Level Meter

Web Enabled Level Meter

The **Compulogic SLi-4** is a web enabled, flexible and simple to configure Level meter. Featuring a large 4 digit LED display, on-board web server, email alerts and full remote access via the integral Ethernet interface.

The Integrated web server of the **Compulogic SLi-4** provides flexibility and ease of programming via a standard web browser. Additionally, meter readings can be viewed remotely via a web browser and email alerts can be generated when readings exceed user programmed thresholds.

Both XML and SNMP are also supported allowing configuration and remote reading using SNMP based network management systems.

The sensor input is configurable for any range from 0-32mA or 0-10V making the SLi-4 compatible with many level transducers including the Compulogic L400 level sensor.

Any given input range may be programmed to display any corresponding user unit range from -9999 to +9999 allowing the meter to read directly in mm, inches, litres, gallons etc. When used to measure tank levels the unit will compute the correct volume versus liquid level for two standard (linear or cylindrical), and one user defined tank geometries.

Direct or reverse acting sensors are also supported.

A front panel push button enables the displayed value to be selectable between liquid level, liquid volume, min volume, max volume, % volume or transducer input value. Any or all of the displayed values are available simultaneously and remotely in a web browser or NMS.



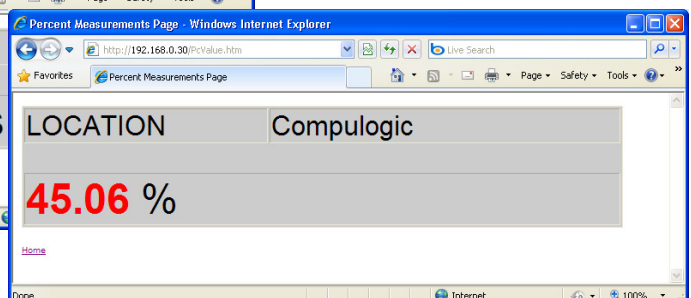
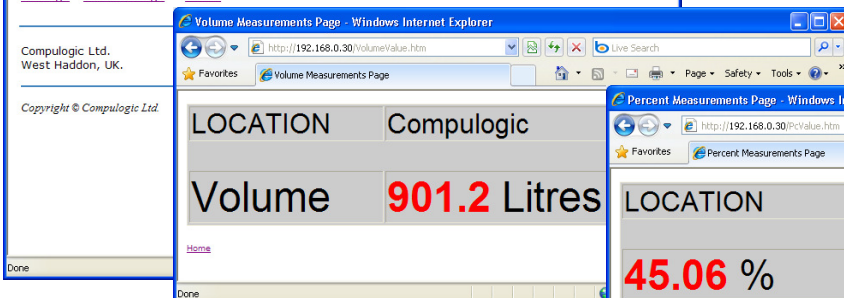
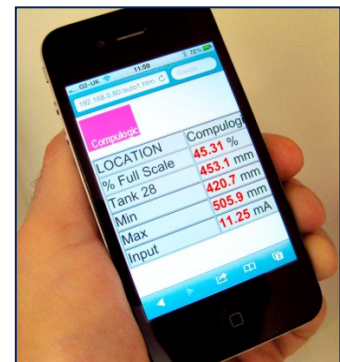
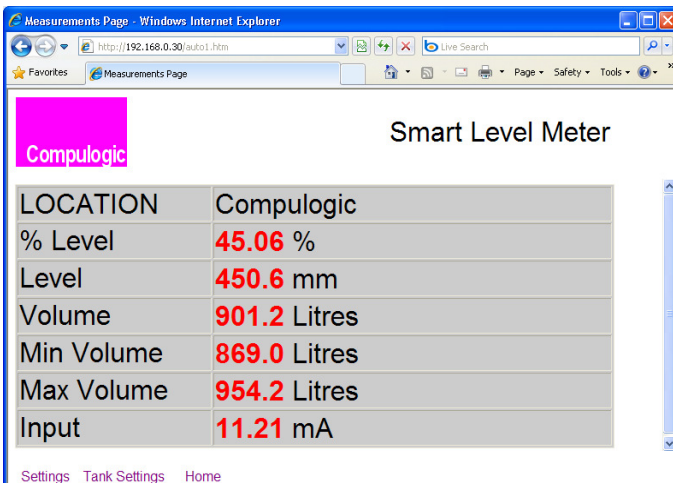
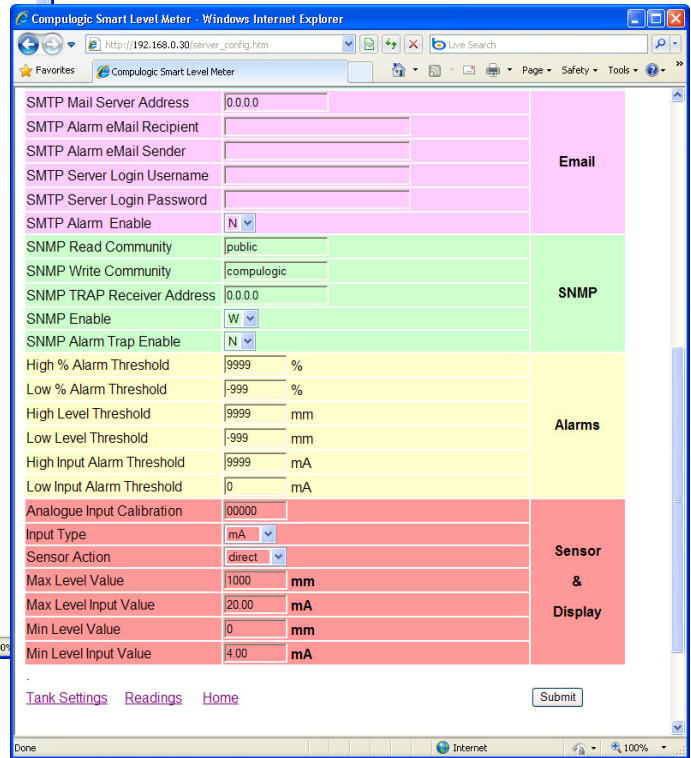
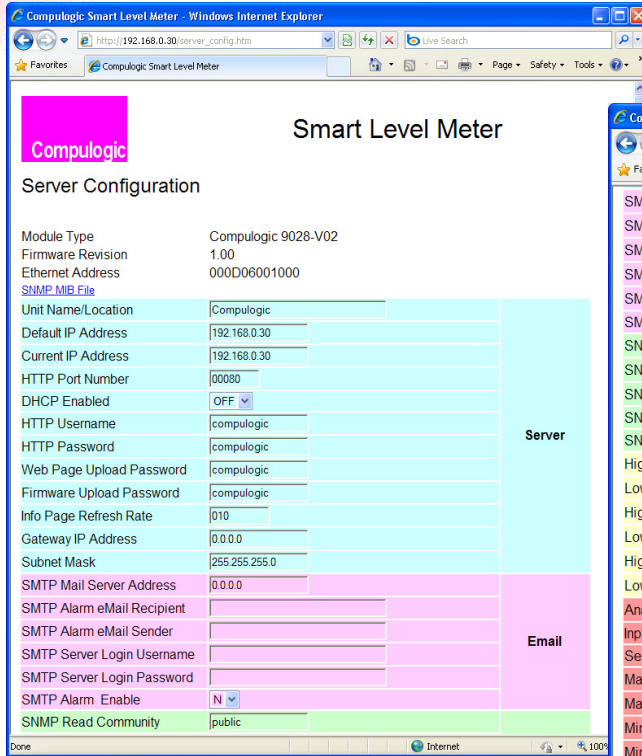
Key Features

- Large, bright LED front panel display
- Compatible with many current or voltage output level transducers
- On-board web server for easy configuration and remote monitoring
- Local display of liquid level, max level, min level, volume, % capacity or input value.
- Direct or reverse acting sensors
- Programmable email level alarm alerts
- XML support allows readings to be directly imported into Excel etc.
- SNMP support allows config. and monitoring via a Network Management System
- Compact standard 1/8 DIN 48 X 96 mm mounting, only 30mm depth
- Automatic IP address configuration via DHCP

Simple Configuration and Remote Access

The **SLi-4** web interface makes configuration straight forward and provides simple remote access.

Web browser configuration



Remote Measurements Display

Specifications

Functions

Display	4 Digit Red LED 13.2mm High
Display Range	-9999 to +9999 with floating decimal point
Transducer Input	Any range within 0-32mA or 0-10V
Accuracy	0.1%
Web Server	Allows configuration and remote reading via web browser
Email	Sends email alarm alerts for input value, user value and % value
SNMP	V1 with traps function for alarm alerts

Tank Geometries

For % capacity and volume calculations the following tank geometries are supported:

Rectangular or cylinder on end

Horizontal Cylinder

Irregular, user definable capacity vs. depth

Network

Interface	Ethernet 10baseT
Protocols	IP,UDP,TCP,TFTP,HTTP,ICMP,SNMP,SMTP,DHCP

Mechanical

Type	1/8 DIN
Connection	3.5mm Plug-in screw terminal block
Dimensions (Bezel)	96mm x 48mm
Dimensions (behind panel)	92mm x 45mm x 30mm
Maximum Panel Thickness	15mm
Weight	150g

Power Supply

Voltage	8-30VDC or +5VDC
Current	50 mA
Sensor Output	5V, 750mA Max.

Environmental

Operating Temperature	0 - 50 °C
Humidity	0-95%RH, non-condensing

Ordering Information

Part Number	PP9028-V02
Description	SLi-4 Smart Level Meter



Designed and made in the UK



Compulogic Limited
Unit 6 Ryehills Lane
West Haddon
Northants NN6 7BX
Tel: +44 (0)1788 510573
Fax: +44 (0)1788 510078
sales@compulogic.co.uk
www.compulogic.co.uk